

Meet the Managing Director

Who

Close

Where

Print

With

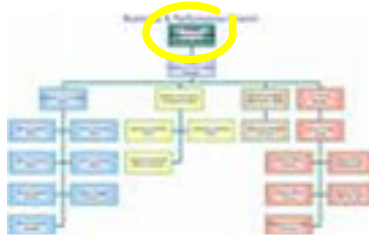
How

CV

How does the managing director fit in?

In the organisation chart...

...Steve sits almost at the top of the organisation chart. The only people he has to report to are the Board of Directors. The heads of the various departments report to the managing director. In a smaller company like Steve's, he will know everyone who works for him, but in larger companies the managing director probably wouldn't recognise most of the people he's in charge of.



In the building...

...Steve sits in his own office near the finance manager and the human resources manager, while the other managers sit close to the people on their teams. In some companies, managing directors have much bigger offices and teams of assistants, while in others the managing director will sit right next to his employees. It all depends on the building, the type of business, and the corporate culture.



➔
Next page